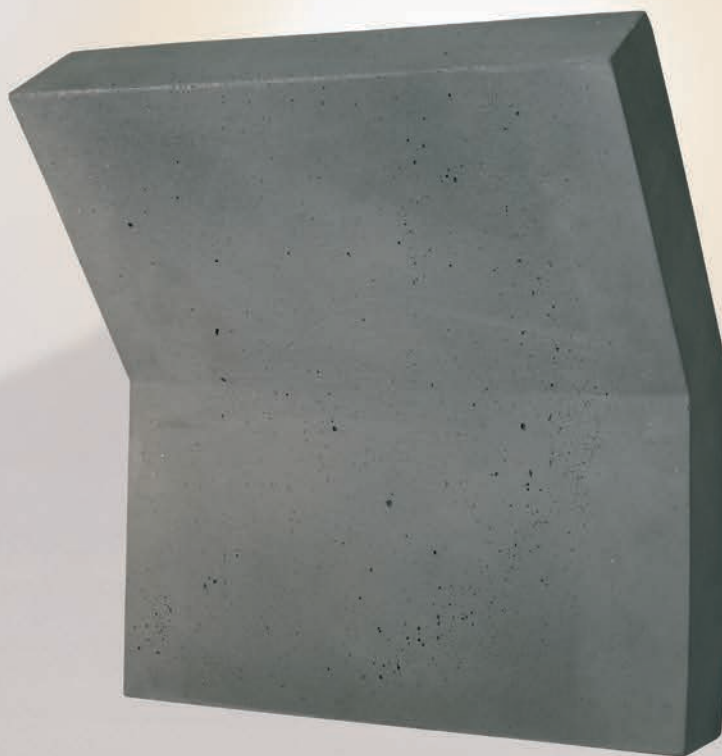


**QUALIKO**

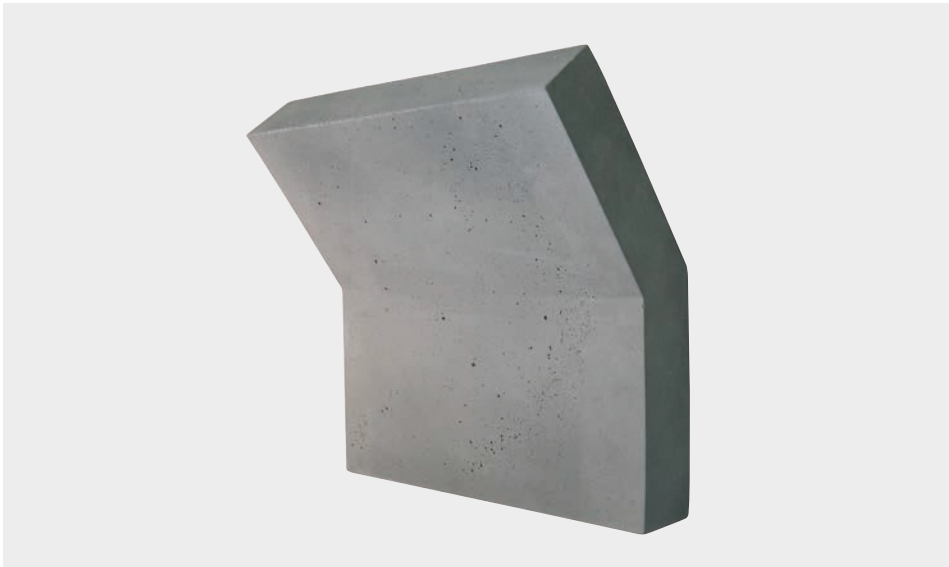
PROFESSIONAL LIGHT COMPONENTS

2022



Lampade LED Cemento • LED Concrete lamps

Made in Italy



CE IP54 EMC RoHS

Type	Part N°	Input (V)	Power (W)	Lumen	Light Colour	°Kelvin (±10%)	CRI	Dimensions (mm)	Packing box dimensions (mm)	Weight (kg)
FOLD LARGE	<b>BWC8422LEDNW</b>	100÷250 AC	31±1	3800	NW	4000°K	>80	135x300x300h	380x370x160h	3,00
FOLD LARGE	<b>BWC8422LEDWW</b>	100÷250 AC	31±1	3650	WW	3000°K	>80	135x300x300h	380x370x160h	3,00

### Applique LED

- Struttura in Cemento
- Grande omogeneità luminosa
- Funziona in bassa tensione con trasformatore incorporato
- Consumo molto limitato
- Lunga durata

### LED wall lamp

- Structure in Concrete
- Homogeneous light output
- Safety low voltage with specific included driver
- Limited consumption
- Long life time

### LED Wandleuchte

- Struktur in Beton
- Homogenes Licht
- NV-Betrieb durch besonderen Transformator
- Begrenzter Verbrauch
- Lange Lebensdauer

### Applique LED

- Corps en Ciment
- Luminosité très homogène
- Il marche en basse tension avec alimentation intégrée
- Consommation très limitée
- Longue durée de vie

### Lamparas de pared LED

- Estructura de Cemento
- Excelente homogeneidad luminica
- Alta seguridad por funcionamiento a baja tension, con transformador integrado
- Consumo muy limitado- Larga vida

