

**QUALIKO**

PROFESSIONAL LIGHT COMPONENTS

2022

# LED PANEL 60x60 SMART

QUALIKO

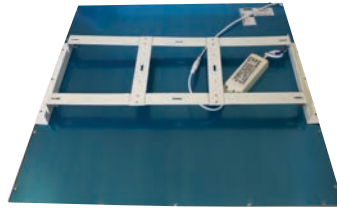


CE EMC IP 40 RoHS

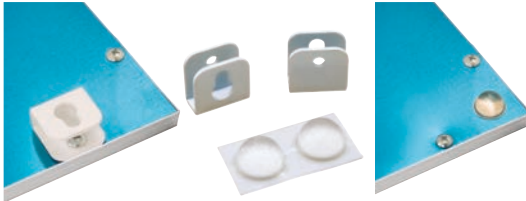
Optional: suspension kit - Part N°: BPLKIT4X150C



Optional: ceiling kit - Part N°: BPLKITCEIL1B



Optional: wall kit - Part N°: BPLKITWALL0B



Optional: spring kit Part N°: BPLKITSPRING



Optional: closed ceiling kit (60x60 only)



Type	Part N°	Dimensions (mm)	Input (V)	Frame colour	°Kelvin	Lumen	Power (W)	Packing box dimensions (mm)	Weight (kg)
60x60 SMART	<b>BPL6060SMART</b>	595x595x9h	200÷240AC	White	3000°K ÷ 5700°K	3315÷3539	33	710x640x30h	3,0



Smart Life

## 🇮🇹 Pannello LED 60x60 DRI SMART

- Temperatura di colore regolabile da bianco caldo a bianco freddo
- Dimmerabile dall'1% al 100% di luminosità
- Controllo remoto da qualsiasi luogo tramite app vocale o smartphone (Tuya - Smart Life) o Amazon Echo o Google Home
- Seleziona liberamente qualsiasi scena luminosa
- Risparmio energetico ottenuto con la funzione di programmazione

## 🇬🇧 LED panel 60x60 DRI SMART

- Tunable color temperature from warm white to cool white
- Dimmable from 1% to 100% brightness
- Control remotely from anywhere via voice or smartphone app (Tuya - Smart Life) or Amazon Echo or Google Home
- Freely select any lighting scenes
- Energy saving achieved with programmable function

## 🇩🇪 LED-Tafel 60x60 DRI SMART

- Einstellbare Farbtemperatur von warmweiß bis kaltweiß
- Dimmbar von 1% bis 100% Helligkeit
- Über Sprach- oder Smartphone-App (Tuya - Smart Life), Amazon Echo, Google Home von überall aus fernsteuern
- Beliebige Lichtszenen frei wählen
- Energieeinsparung durch programmierbare Planungsfunktion

## 🇫🇷 Panneau LED 60x60 DRI SMART

- Réglage de la température de couleur de blanc chaud à blanc froid
- Luminosité réglable de 1% à 100%
- Contrôle par application vocal ou Smartphone (Tuya - Smart Life) ou Amazon Echo ou Google Home
- Sélection libre de n'importe quelle scène de lumière
- Économie d'énergie par la fonction de programmation

## 🇪🇸 Panel LED 60x60 DRI SMART

- Temperatura de color ajustable de blanco cálido a blanco frío
- Regulable de 1% a 100%
- Control remoto desde cualquier lugar a través de la aplicación de voz o teléfono inteligente (Tuya - Smart Life) o Amazon Echo o Google Home
- Selección libremente cualquier escena de iluminación
- Ahorro de energía logrado con la función de programación

